

Assignment 4.1

Indicate the type of triad shown using the following abbreviations: M = major, m = minor, d = diminished, and A = augmented.

1. 2. 3. 4. 5. 6. 7. 8. 9. 10.

11. 12. 13. 14. 15. 16. 17. 18. 19. 20.

Assignment 4.2

Write the requested triad above each given note as shown in the example.

Alternative Directions: Macro Analysis

1. Complete the requested triad above each given note.
2. Below the staff, write the letter symbol that represents each chord according to the macro analysis system.

Major Triad

1. (Ex.) 2. 3. 4. 5. 6. 7. 8. 9. 10.

Minor Triad

11. 12. 13. 14. 15. 16. 17. 18. 19. 20.

Diminished Triad

21. 22. 23. 24. 25. 26. 27. 28. 29. 30.

Augmented Triad

31. 32. 33. 34. 35. 36. 37. 38. 39. 40.

Assignment 4.3

1. Write the requested triads as shown by the Roman numerals.
2. Be sure to write the correct accidentals to the left of the appropriate notes.

1. (Ex.)	2.	3.	4.	5.	6.	7.
D: I	d: VI	F: vi	Eb: V	Cb: iii	B: IV	eb: V
8.	9.	10.	11.	12.	13.	14.
Db: ii	F#: ii	Eb: IV	bb: ii°	g#: III	a#: i	Bb: iii
15.	16.	17.	18.	19.	20.	21.
d#: VI	b: vii°	f#: i	c: III+	a: iv	A: I	g: VII
22.	23.	24.	25.	26.	27.	28.
C: vi	G: vii°	Ab: I	e: ii°	c#: i	Gb: vii°	ab: iv

Assignment 4.4

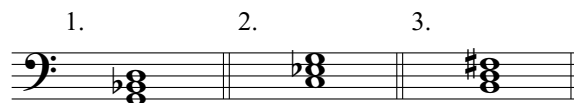
1. Following is a series of major triads.
2. Write the three major keys and the two minor keys (harmonic form) in which each triad is diatonic. The example is worked correctly for you.

1.	2.	3.

	Chord	Key		Chord	Key		Chord	Key
1. (Ex.)	I	in F major	2.	_____	in _____	3.	_____	in _____
	IV	in C major		_____	in _____		_____	in _____
	V	in Bb major		_____	in _____		_____	in _____
	V	in Bb minor		_____	in _____		_____	in _____
	VI	in A minor		_____	in _____		_____	in _____

Assignment 4.5

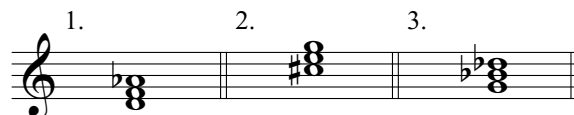
1. Following is a series of minor triads.
2. Write the three major keys and the two minor keys (harmonic form) in which each triad is diatonic. The example is worked correctly for you.



	Chord	Key		Chord	Key		Chord	Key
1. (Ex.)	ii	in F major	2.	_____	in _____	3.	_____	in _____
	iii	in Eb major		_____	in _____		_____	in _____
	vi	in Bb major		_____	in _____		_____	in _____
	i	in G minor		_____	in _____		_____	in _____
	iv	in D minor		_____	in _____		_____	in _____

Assignment 4.6

1. Following is a series of diminished triads.
2. Write the one major key and the four minor keys (two harmonic form and two melodic form) in which each triad is diatonic. The example is worked correctly for you.



	Chord	Key		Chord	Key		Chord	Key
1. (Ex.)	vii°	in Eb major	2.	_____	in _____	3.	_____	in _____
	ii°	in C minor (harmonic)		_____	in _____		_____	in _____
	vii°	in Eb minor (harmonic)		_____	in _____		_____	in _____
	vi°	in F minor (melodic)		_____	in _____		_____	in _____
	vii°	in Eb minor (melodic)		_____	in _____		_____	in _____

Assignment 4.7

- Following are 10 triads, in various positions and of various types, arranged in four-part harmony (soprano, alto, tenor, and bass).
- Complete the blanks as requested. The example is worked correctly for you.

1. (Ex.) 2. 3. 4. 5. 6. 7. 8. 9. 10.

	Root	Position	Type		Analysis Symbol
Chord No. 1:	C	2nd Inversion	Major	in G major:	IV ₄ ⁶
Chord No. 2:	_____	_____	_____	in F major:	_____
Chord No. 3:	_____	_____	_____	in A major:	_____
Chord No. 4:	_____	_____	_____	in F major:	_____
Chord No. 5:	_____	_____	_____	in B minor (harmonic):	_____
Chord No. 6:	_____	_____	_____	in A minor (natural):	_____
Chord No. 7:	_____	_____	_____	in B \flat minor (harmonic):	_____
Chord No. 8:	_____	_____	_____	in B minor (harmonic):	_____
Chord No. 9:	_____	_____	_____	in G \sharp minor (harmonic):	_____
Chord No. 10:	_____	_____	_____	in F \sharp major:	_____

Assignment 4.8



The following are excerpts from music literature.

- Identify the triads in each excerpt. Certain notes have been circled. These are not considered part of the triads. Brackets have been added to numbers 3, 4, and 5 to identify the triads more clearly.
- Write the Roman numeral analysis of each chord and indicate the position: ⁶ if in first inversion, ₄⁶ if in second inversion, and no numbers if in root position.
- Each chord is numbered for convenience in class discussions.

Alternative Directions: Macro Analysis

Provide the correct letter symbol for each chord and add slur symbols according to the information on pages 83–84.

1. Tallis: “God Grant We Grace” (“Tallis’s Canon”), mm. 5–8. **CD Track 21**

G major: 1 2 3 4 5 6 7 8 9 10 11 12 13 14 15 16

2. Crüger: “Herr, ich habe missgehandelt” (“Lord, I have transgressed”), mm. 1–9. **CD Track 22**

G minor: 1 2 3 4 5 6 7 8 9 10 11 12 13 14 15

3. Mozart: Sonata in C Major, K. 545, I, mm. 63–66. **CD Track 23**

C major: 1 2 3 4

5 6 7 8

Assignment 4.9



Following are several four-part chorale phrases harmonized by J. S. Bach. (Certain embellishing tones have been omitted.)

1. Under the staves, indicate the figured-bass symbols that would be used to obtain the chords written by Bach.
2. This assignment is designed to help you learn figured-bass symbols. In selecting chords that require a variety of symbols, some chords have been included that are not intended for analysis at this time, so you are asked to supply only figured-bass symbols and not Roman numerals. The example illustrates the correct procedure.
3. One figured-bass symbol (in no. 2) has been supplied for you.

1. (Ex.) Bach: “Von Gott will ich nicht lassen” (“I Will Not Leave God”), BWV 418, mm. 5–6. **CD Track 26**

6/5 6 6/4 # #

2. Bach: “Das neugeborne Kindelein” (“The Newborn Child”), BWV 122, mm. 13–16. **CD Track 27**

3. Bach: “Seelen-Bräutigam,” (“Bridegroom of the Soul”), BWV 409, mm. 1–2. **CD Track 28**

4. Bach: “Schwing’ dich auf zu deinem Gott” (“Soar Upward to Thy God”), BWV 40, mm. 1–2. **CD Track 29**

5. Bach: “O Lamm Gottes, unschuldig” (“O Lamb of God, Most Stainless”), BWV 401, mm. 3–4. **CD Track 30**

Assignment 4.10

Fill in the macro analysis symbol below each of the given chords.

1. (Ex.) 2. 3. 4. 5. 6. 7. 8. 9. 10.

F _____

11. 12. 13. 14. 15. 16. 17. 18. 19. 20.

Assignment 4.11

Write the chords indicated by each of the popular-music symbols.

1. (Ex.) A^b 2. E^{dim.} 3. D^{b+} 4. F_{MI} 5. B^b 6. A^{dim.} 7. E^{b+} 8. G[#]_{MI} 9. D 10. G^{dim.}

11. C^{dim.} 12. G^b 13. B_{MI} 14. C^{b+} 15. E[#]_{MI} 16. D^{dim.} 17. F^{b+} 18. C[#] 19. D^b_{MI} 20. A⁺

Assignment 4.12

Indicate the popular-music symbol for each of the given chords.

1. (Ex.) A 2. _____ 3. _____ 4. _____ 5. _____ 6. _____ 7. _____ 8. _____ 9. _____ 10. _____

11. _____ 12. _____ 13. _____ 14. _____ 15. _____ 16. _____ 17. _____ 18. _____ 19. _____ 20. _____