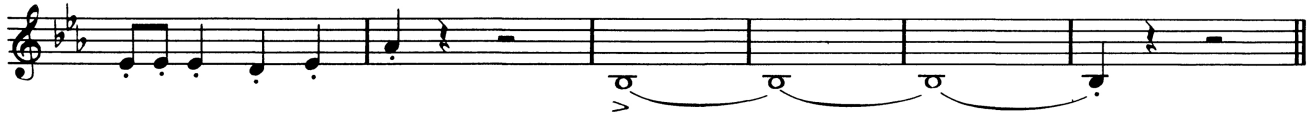


SLEIGH RIDE

2nd F Horn

LEROY ANDERSON
arr. and adapted by James D. Ployhar

Allegro moderato



A




B



C



to Coda 



© Copyright 1948, 1980 by Mills Music, Inc.,
Copyright Renewed

89324

International Copyright Secured

Made in U.S.A.

All Rights Reserved

2nd F Horn

The musical score for the 2nd F Horn part consists of eight staves of music. The first staff begins with a dynamic of *mf* and includes a boxed letter 'D' above the staff. The second staff starts with *f* and *p*, ending with *f*. The third staff starts with *mf*. The fourth staff starts with *f* and *p*, ending with *f* and *p*. The fifth staff starts with *f* and ends with *mf*. The sixth staff begins with a boxed letter 'E' above the staff and starts with *mf*. The seventh staff includes the instruction 'D.C. al Coda' above the staff and starts with *f*. The eighth staff begins with a Coda symbol (a circle with a cross) and the word 'Coda' above the staff, and includes dynamics *p*, *f sfz pp*, *mf*, and *ff*.